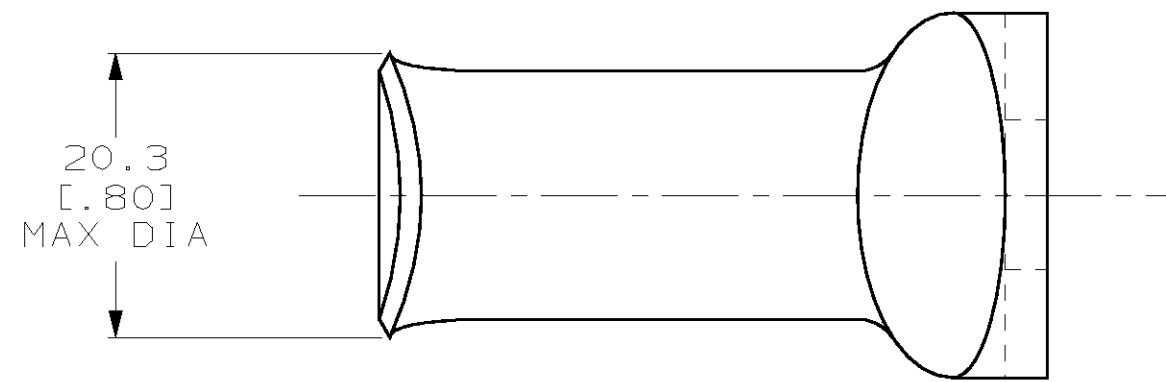
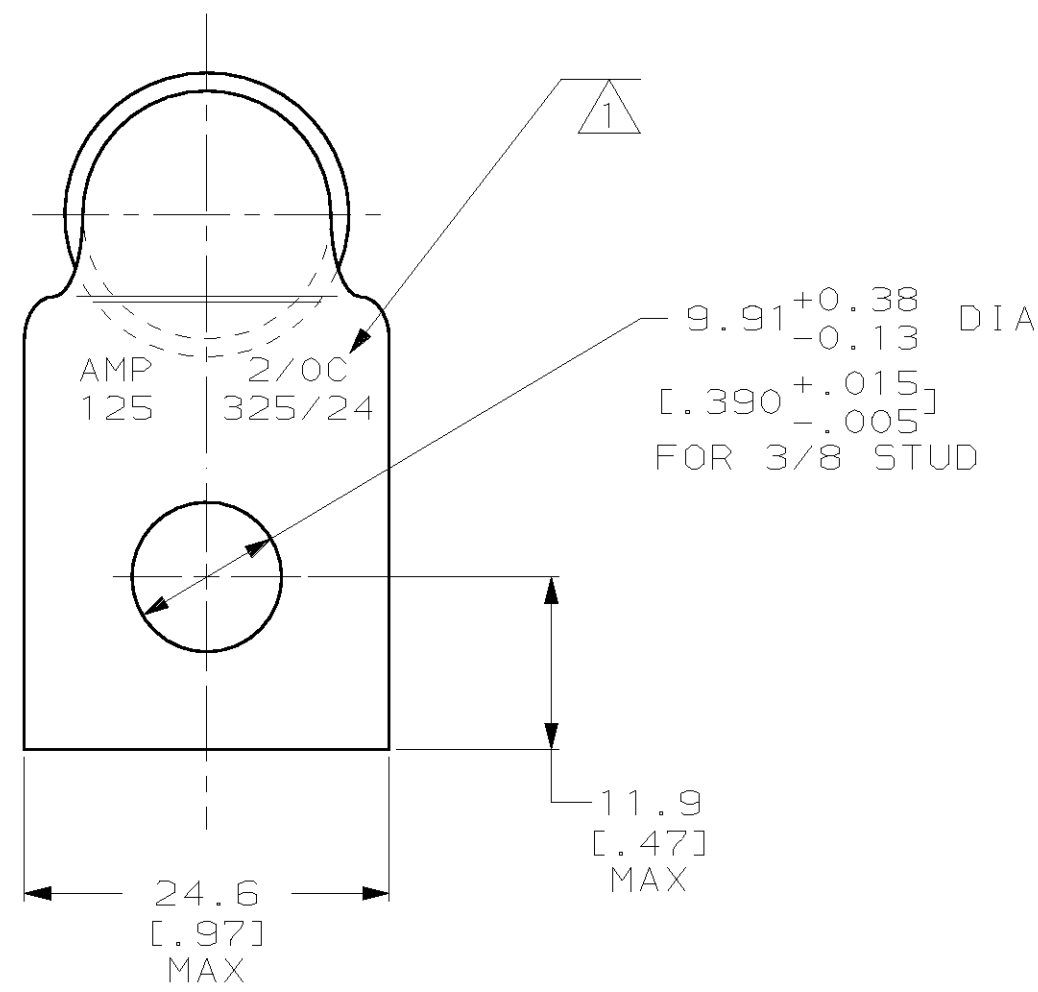
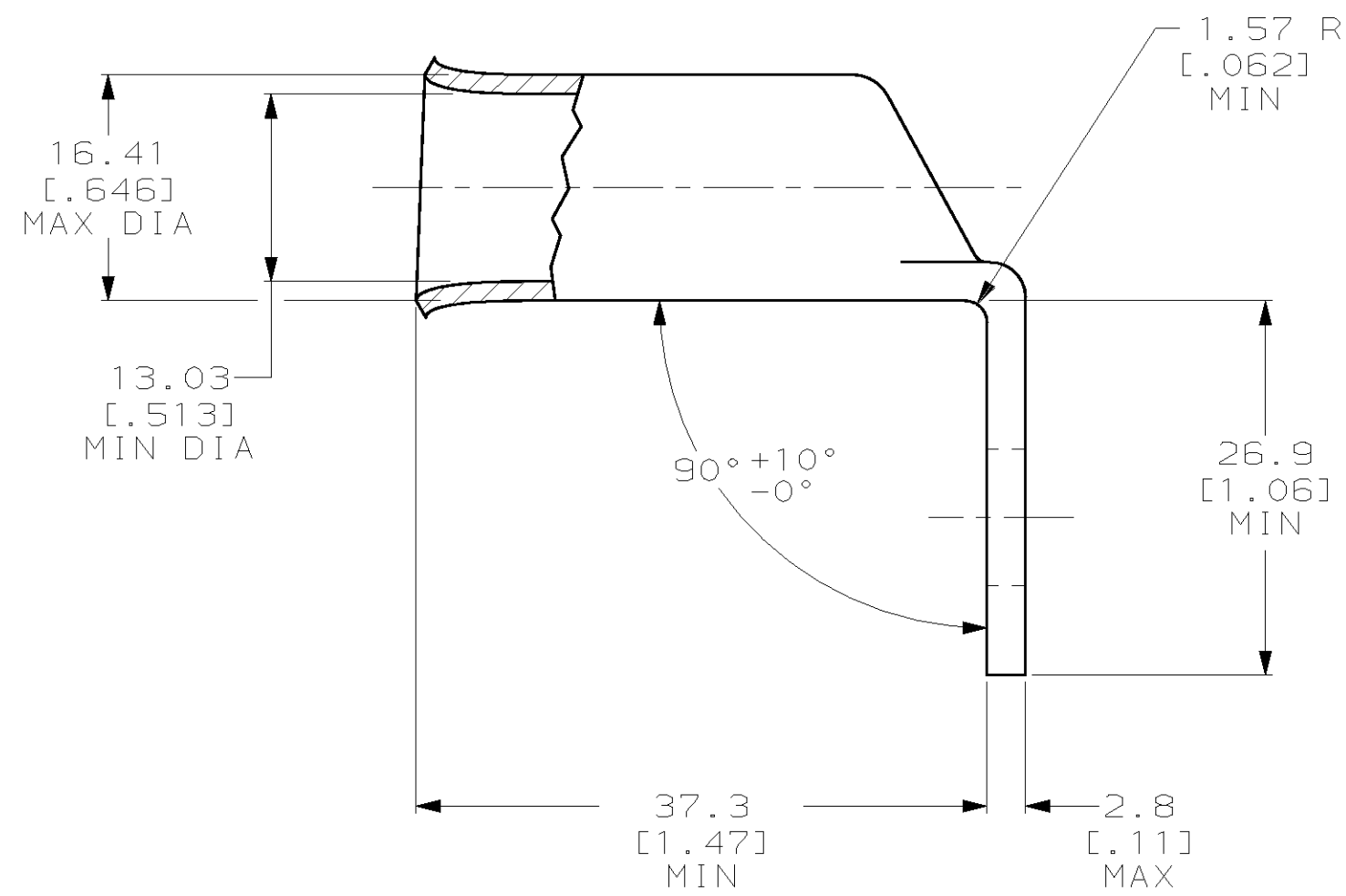


THIS DRAWING IS UNPUBLISHED. RELEASED FOR PUBLICATION
 (C) COPYRIGHT 19 BY AMP INCORPORATED. ALL RIGHTS RESERVED.

LOC	DIST	REVISIONS					
		P	LTR	DESCRIPTION	DATE	DWN	APVD
G	86	D		REV PER 063A-0561-01	070CT02	JR	MS



△ STAMP AMP 2/0C 125 325/24 APPROX AS SHOWN



184259

184259-1
PART NUMBER

**AMP INCORPORATED
CUSTOMER SERVICE SYSTEMS**

RECOMMENDED OPERATING TEMPERATURE:
170° MAX

FOR ADDITIONAL PRODUCT INFORMATION OR COPIES OF DRAWINGS AND TECHNICAL DOCUMENTS

PRODUCT INFORMATION CENTER
1-800-522-6752

VOLTAGE RATING:
NOT APPLICABLE

FOR APPLICATION TOOLING INFORMATION

TOOLING ASSISTANCE CENTER
1-800-722-1111

WIRE CROSS SECTIONAL AREA RANGE:
60.6-76.3mm² [119,500-150,500] CIR MILS
SOLID OR STRANDED

FOR ORDER ENTRY

1-800-526-5142

THIS DRAWING IS A CONTROLLED DOCUMENT FOR AMP INCORPORATED. IT IS SUBJECT TO CHANGE AND THE CONTROLLING ENGINEERING ORGANIZATION SHOULD BE CONTACTED FOR THE LATEST REVISION.

DWN DK SCHRUM 20DEC95
CHK WJ VOCKROTH 02JAN96
APVD JL MECKLEY 02JAN96

AMP AMP Incorporated
Harrisburg, PA 17105-3608

DIMENSIONS:
mm [INCHES]

TOLERANCES UNLESS OTHERWISE SPECIFIED:

- 0 PLC ±
- 1 PLC ±
- 2 PLC ±
- 3 PLC ±
- 4 PLC ±
- ANGLES ±

NAME
JL MECKLEY

PRODUCT SPEC
108-30200

APPLICATION SPEC
-

TERMINAL, BENT 90, AMPPOWER,
WIRE SIZE: 2/0 AWG

MATERIAL
COPPER
PER ASTM B-75
ANNEALED

FINISH TIN PLATE
0.00381 [0.00150] MIN
THK PER ASTM B545

WEIGHT .072 lbs
CUSTOMER DRAWING

SIZE A2 CAGE CODE 00779 DRAWING NO C-184259
SCALE 2:1 SHEET 1 OF 1 REV D